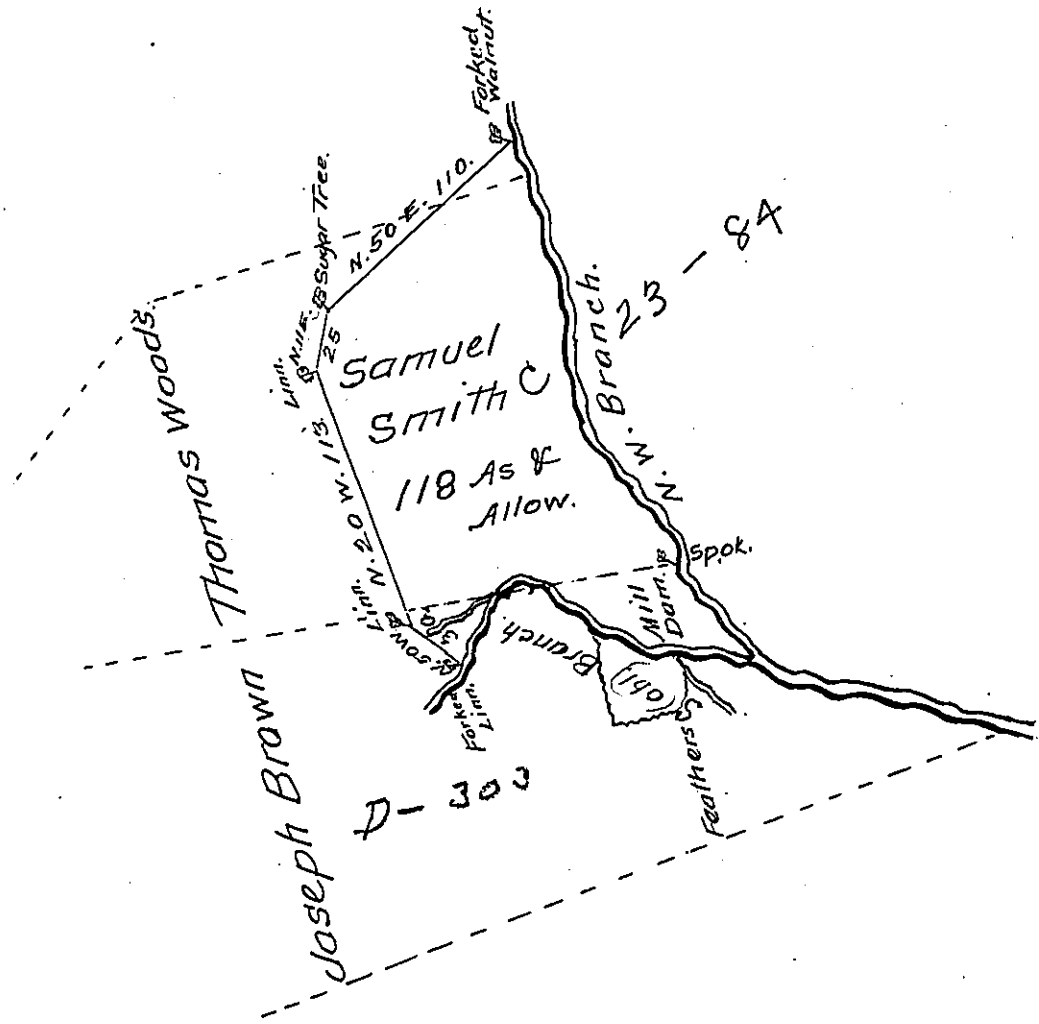


Courses & Dist. Down
the N.W. Branch & up
the S.W. Branch from
the forked Walnut
to the forked Linn.

N			
1-	S.	15°	E. 80.
2-	S.	3	E. 32.
3-	S.	36	E. 78.
4-	S.	18	W. 7.
5-	S.	39	E. 55. <i>Down</i>
			<u>252</u>
6-	N.	84	W. 65.
7-	N.	46	W. 24.
8-	N.	60	W. 25.
9-	S.	35	W. 43. <i>Up</i>
			<u>157</u>
409.			



A Draught of a Tract of Land called Spring Meadow
situate in the forks of the North Branch of the Frankstown
Branch of Juniata-about 3 1/2 Miles above James (now Alexan-
der) Lowrey in Frankstown Township in the County of Bedford
Containing one hundred & eighteen Acres & the usual Allowance
of six p. Cent. for Roads &c. Surveyed the 3^d. Day of December
1774 for Samuel Smith in pursuance of a Warrant Dated
the third Day of February 1755 by
To John Lukens Esq^e. } Thomas Smith D.S.
Surveyor General - }

N. B. The above Survey takes off part of a Tract Surveyed
for Joseph Brown now the Property of ~~Joseph Brown~~ William Cox^e Esq^e
& a Survey made (abl) Thomas Woods now the Property of William
Henry of Philad^a. Mr Cox^e's Survey was never run nor mark-
ed nor Mr. Henry's. T.S.

IN TESTIMONY that the above is a copy of the original remaining on file in
the Department of Internal Affairs of Pennsylvania, made
conformably to an Act of Assembly approved the 16th day of
February, 1833, I have hereunto set my Hand and caused
the Seal of said Department to be affixed at Harrisburg,
this thirtieth day of October 1907.

Henry Houck

Secretary of Internal Affairs.